

All in one Software

For easy control and data processing

uSoft Software

Technospex uSoft software is built for easy control of systems and data processing. An intuitive interface enables seamless work-flow during testing, interpretation of the data and collation of result. Multiple systems can be controlled simultaneously with just a single software.

Control your system

uSoft, a one-stop communication interface between you and your system. Experiment can be carried out hassle free, with just a few clicks.

Data collection

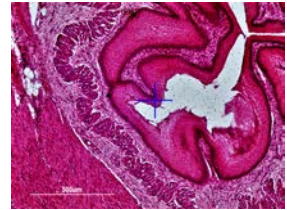
- Data can be acquired easily with a single click
- Acquired data can be saved / exported for future analysis
- Collation of several spectrum in one graph
- Various data collection modes, such as single, live and accumulation

Software control

- **Laser power control** - No physical attenuator or filter needed
- **Shutter** – For safety purpose, auto open and close of shutter is implemented. Shutter open when acquisition starts and closes when acquisition stops.

Sample viewing

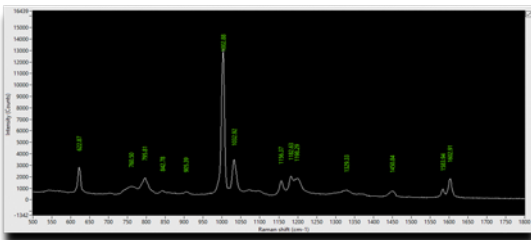
- Viewing, locating, capture and store images of samples
- Mapping stage can be controlled using the camera
- Camera is calibrated to precise scale



Key Features:

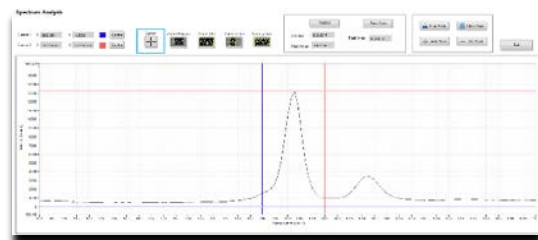
Peak finder

Auto detection of peak value



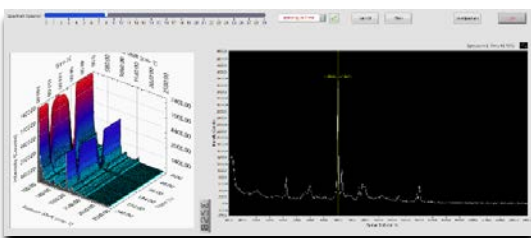
Analysis peak

FWHM, Peak location, Peak area



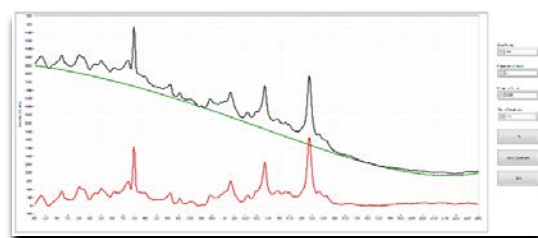
Time lapse

Multiple spectrums can be taken in a selected time frame without constant monitoring



Baseline removal

Removal of background fluorescence for easy reading

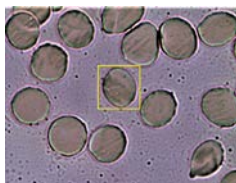


Motorized Stage (Mapping)

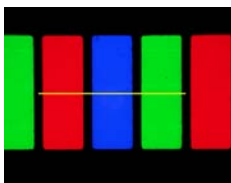
When equipped with a motorized stage, automated stage movements and high resolution mapping functions are possible.

Functions

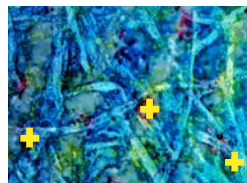
- ✓ **Stage move**
 - Stage can be move to absolute position by entering the XY coordinate of the stage
 - Move to relative position by entering step size
 - Position can be selected by clicking on the camera screen
- ✓ **Area Map**
 - User define scan area with start and end location
 - Resolution of scan is define by the step size
 - Create hyperspectral image of map area
- ✓ **Multi-point / Line Map**
 - Automated multiple point measurement



Area Map

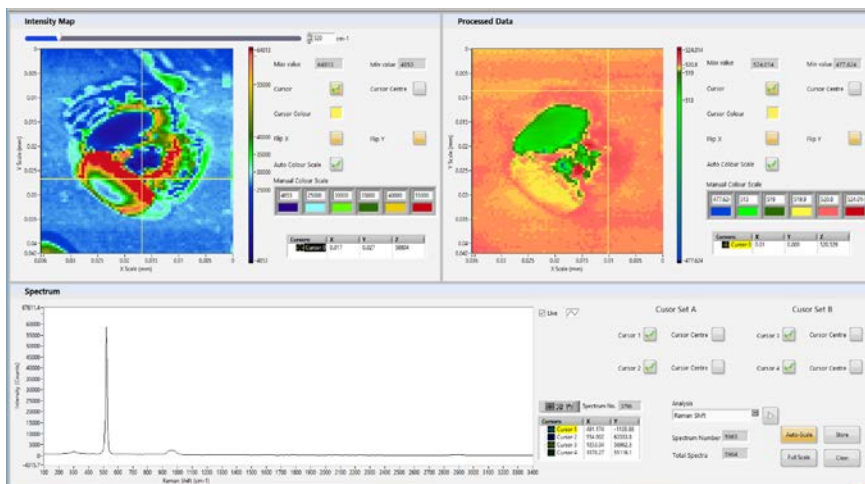


Line Map

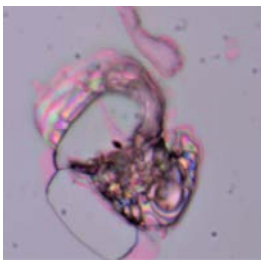


Multi Point Map

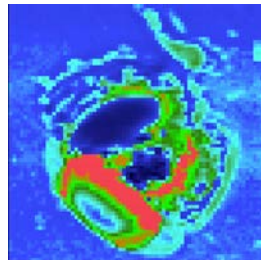
Map view GUI



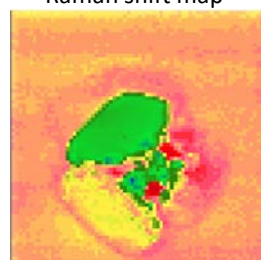
Indentation on Silicon



Intensity map of 520cm⁻¹



Raman shift map



Panorama (Add-on option)

uSoft provides control and acquisition capability of the software. For more comprehensive spectrum processing and functionalities, we would like to recommend Panorama. Panorama can be purchased together with the uRaman system or as an add-on.

Advanced data evaluation and mathematics

Panorama gives you the ability to view spectral information. You can manipulate/process data using many mathematical functions and algorithms. All standard mathematical functions used in spectroscopy e.g. derivatives, baseline correction, spectral arithmetic, normalization, smoothing, peak picking and more are included in Panorama.

Spectral search and libraries

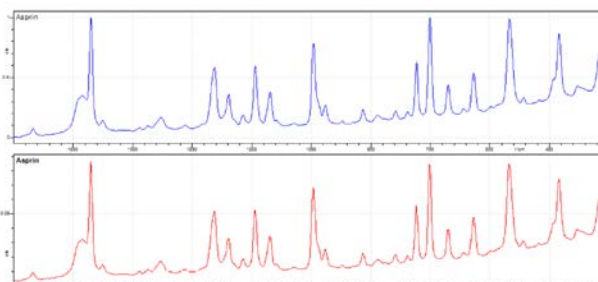
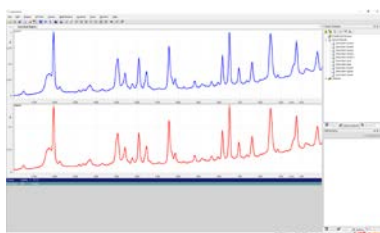
You can ...

- Perform spectral search and subsequent residual search
- Perform full text search

Functionality is supported for commercial spectral libraries, file system data, or custom spectral libraries built by you.

Chemometrics and Prediction module

Panorama provides all major multivariate analysis methods like PLS-1, PLS-2, SIMPLS, MLR, PCR, and PCA methodologies, so you can choose the appropriate processing tool for your analysis. It is an ideal add-on for Panorama users requiring advanced quantitative analysis methods for spectroscopic data evaluation.



TITLE: Asprin - SearchQuality:
TITLE: Asprin - SearchQuality: 100

An Asprin data is obtained showing 100% match with Panorama database

Blue: Data from system
Red: Result from Panorama

Technospex

TechnoSpex Pte Ltd

1092 Lower Delta Road #04-01 Singapore 169203

Tel : +65-6276 6928 | Fax : +65-6276 1558

Email : sales@technospex.com | www.technospex.com